





BERLIN / BERLIN FR

SCHEDA TECNICA BERLIN / BERLIN FR

BERLIN / BERLIN FR

Composizione: Composition:	100% Poliestere 100% Polyester	Peso (gr/mq): Weigth:	280	Spessore (mm): Thickness:	0,44	Larghezza tessuto (mm): Width:	3000	
Comportamento alla fiamma: Flammability:	Ignifugo CLASSE 1 Fire retardant Class 1 Non ignifugo Flammable	 	Pulizia: Cleaning:	Panno umido Damp cloth	Stabilità alla luce: Light fastness:	7	Taglio: Cut:	Taglio a freddo o a ultrasuoni Cold cut or ultrasonic

Codice Code	Colore Color	Proprietà solari Solar properties			Installazione Interna Indoor Installation			
		TS %	RS %	AS %	VETRO TIPO C Gv= 0,59	CLASSE	VETRO TIPO D Gv= 0,32	CLASSE
BE-400	Bianco Ottico	0	73	27	0,33	CLASSE 2	0,24	CLASSE 2
BE-401	Bianco	0	79	21	0,31	CLASSE 2	0,24	CLASSE 2
BE-410	Grigio	0	45	55	0,42	CLASSE 3	0,27	CLASSE 2
BE-411	Grigio scuro	0	47	53	0,41	CLASSE 3	0,27	CLASSE 2
BE-417	Antracite	0	8	92	0,54	CLASSE 0	0,30	CLASSE 2
BE-430	Avorio	0	69	31	0,34	CLASSE 2	0,25	CLASSE 2
BE-435	Nocciola	0	62	38	0,37	CLASSE 1	0,25	CLASSE 2
BE-460	Nero	0	4	96	0,55	CLASSE 0	0,31	CLASSE 2

TS Trasmissione solare Solar trasmission

RS Riflessione solare Solar reflectance

AS Assorbimento solare Solar absorptance



Non ignifugo



F.R.



Efficientamento
energetico



Greenguard
GOLD



Pannello



Rullo



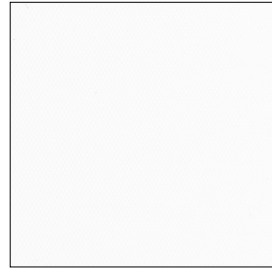
Ufficio



Saldabile



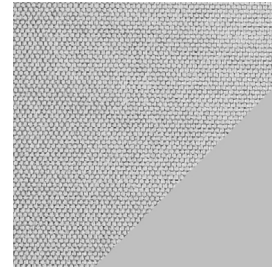
Stampa



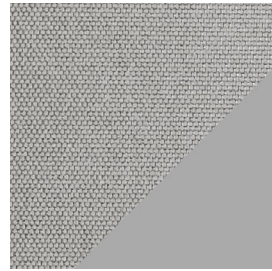
~~✘~~ BE-400 
Bianco ottico



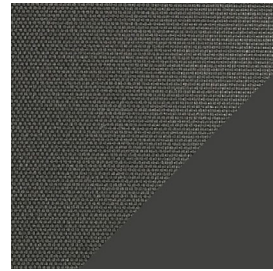
~~✘~~ BE-401 
Bianco



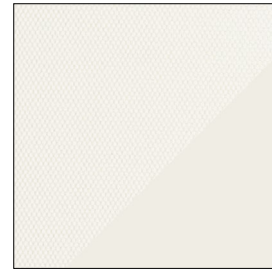
~~✘~~ BE-410 
Grigio



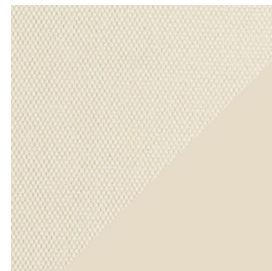
BE-411 
Grigio scuro




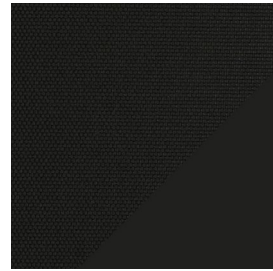
~~✘~~ BE-417 
Antracite



~~✘~~ BE-430 
Avorio



~~✘~~ BE-435 
Nocciola



~~✘~~ BE-460 
Nero